

ALL ANSWERS MUST BE GIVEN ON THE COMPUTERIZED ANSWER SHEET
BY CROSSING THE CORRESPONDING LETTER

Mathematics M.C.Qs

No. of Questions: 50 (from 1 to 50)
Questions on Page Numbers: 1 To 9

Time: 70 Minutes
Negative Markings: **No**

Q1 The number of elements in the Power set $P(S)$ of the set $S = \{1, 2, \{2, 3\}\}$ is

- A) 1
- B) 2
- C) 4
- D) 8

Q2 Consider 3 binary relations $R_1 = \{(1, 2), (2, 1), (2, 2)\}$, $R_2 = \{(1, 2), (1, 3), (2, 1), (2, 2), (3, 1)\}$ and $R_3 = \{(1, 2), (2, 2), (3, 1)\}$ in the set $A = \{1, 2, 3\}$. The relation which is also an onto function from A to A is

- A) R_1
- B) R_2
- C) R_3
- D) None of these

Q3 If $x = \sqrt{5} + \sqrt{3}$, then the value of $x - \frac{1}{x}$ will be

- A) $0.5(\sqrt{5} + 3\sqrt{3})$
- B) $0.5(3\sqrt{5} + 2\sqrt{3})$
- C) $0.5(\sqrt{5} + 2\sqrt{3})$
- D) None of these

Q4 $\log_2 256 - \log_2 128 + \log_2 64 =$

- A) 4
- B) 5
- C) 6
- D) 7

Q5 The remainder when $x^4 + x^3 - x^2 - x + 10$ is divided by $x + 2$ is

- A) 14
- B) 16
- C) 28
- D) None of these

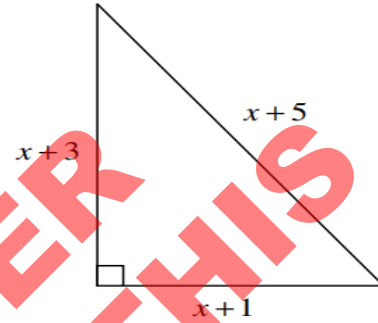
Q6 The Highest Common Factor of three polynomials $12x^2 + 16xy + 5y^2$, $30x^2 - 11xy - 30y^2$ and $6x^2 - xy - 5y^2$ is

ALL ANSWERS MUST BE GIVEN ON THE COMPUTERIZED ANSWER SHEET
BY CROSSING THE CORRESPONDING LETTER

- A) $6x - 5y$
- B) $6x + 5y$
- C) $2x + y$
- D) $5x - 6y$

Q7 The area (in square units) of the triangle in the adjacent figure is

- A) 24
- B) 18
- C) 35
- D) 63



Q8 A number x is subtracted from three times its square and the result is 40. An equation to find the value of x would be:

- A) $x - 3x^2 = 40$
- B) $3x^2 - 3x = 40$
- C) $3x - x^2 = 40$
- D) $3x^2 - x = 40$

Q9 If L and M are two sets, then $L \cap (L \cup M)^c$ equals

- A) $(L \cup M)^c$
- B) $(L \cap M)^c$
- C) $L \cap M^c$
- D) None of these

Q10 The determinant of the matrix $\begin{bmatrix} x & x \\ x & -x \end{bmatrix}$ is

- A) $2x^2$
- B) $2x$
- C) $-2x^2$
- D) 0

Q11 The Adjoint of the matrix $\begin{bmatrix} x & x \\ x & -x \end{bmatrix}$ is

- A) $\begin{bmatrix} x & -x \\ -x & -x \end{bmatrix}$

ALL ANSWERS MUST BE GIVEN ON THE COMPUTERIZED ANSWER SHEET
BY CROSSING THE CORRESPONDING LETTER

B) $\begin{bmatrix} -x & -x \\ -x & -x \end{bmatrix}$

C) $\begin{bmatrix} -x & -x \\ -x & x \end{bmatrix}$

D) $\begin{bmatrix} x & x \\ x & -x \end{bmatrix}$

Q12 The solution set of the system of equation $11x - 12y = 23$, $12x - 11y = 23$ is

- A) $\{(1, 1)\}$
- B) $\{(1, -1)\}$
- C) $\{(-1, -1)\}$
- D) None of these

Q13 If $\sin A = \frac{6}{13}$ and $\sec B = \frac{13}{6}$, then $A + B$ is equal to

- A) 150°
- B) 90°
- C) 60°
- D) 45°

Q14 If $w = 11$, is a solution of the equation $w^2 + kw + 11k = 0$, then the other solution of the equation is

- A) 5.5
- B) -5.5
- C) -11
- D) None of these

Q15 The ratio of the sum of the first three terms of a G.P. to the sum of the first 6 terms is 27 : 19. The common ratio is

- A) $\frac{2}{3}$
- B) $-\frac{2}{3}$
- C) -1.5
- D) 1.5

Q16 A geometric mean between 30 and 480 is

- I. 120 II. 90 III. -120

- A) Only I
- B) Only III
- C) Only I and II

ALL ANSWERS MUST BE GIVEN ON THE COMPUTERIZED ANSWER SHEET
BY CROSSING THE CORRESPONDING LETTER

D) Only I and III

Q17 Suppose next year 7 teams will participate in PSL. Also suppose that in first round every team will play a match with every other team. How many matches will be played in the first round?

- A) 15
- B) 21
- C) 6!
- D) 7!

Q18 Pick up the irrational numbers from $\frac{6}{13}$, $\frac{13}{6}$, π , $(13 + \sqrt{3})$, $\sqrt{36}$ and $\frac{1}{\pi}$

- A) $\frac{6}{13}$ and $\sqrt{36}$
- B) π , $(13 + \sqrt{3})$ and $\frac{1}{\pi}$
- C) $\frac{13}{6}$ and $\sqrt{36}$
- D) $\sqrt{36}$

Q19 Which fraction is the same as 7.22?

- A) $\frac{22}{3}$
- B) $\frac{180}{25}$
- C) $\frac{361}{50}$
- D) None of these

Q20 Find the value of $4(0.4)^3$

- A) 256
- B) 25.6
- C) 2.56
- D) 0.256

Q21 The decimal expansion of $\frac{156}{150}$ will terminate after how many places of decimal?

- A) 1
- B) 2
- C) 3
- D) 4

Q22 $x^2 - 12x + 36 =$

- A) $(x - 6)(x + 6)$
- B) $(x + 6)^2$

ALL ANSWERS MUST BE GIVEN ON THE COMPUTERIZED ANSWER SHEET
BY CROSSING THE CORRESPONDING LETTER

- C) $(x - 6)^2$
D) None of these

Q23 The solution set of the equation $|11y - 12| = 23$ is

- A) $\{\frac{35}{11}, 1\}$
B) $\{1, -\frac{35}{11}\}$
C) $\{\frac{35}{11}, -1\}$
D) None of these

Q24 The solution set of the inequality $|5x - 4| < x + 6, \forall x \in Z$, is

- A) $\{x \mid x \in Z \text{ and } 0 < x < 2\}$
B) $\{x \mid x \in R \text{ and } -\frac{1}{3} < x < \frac{5}{2}\}$
C) $\{0, 1, 2\}$
D) $\{x \mid x \in R \text{ and } -\frac{1}{3} \leq x \leq \frac{5}{2}\}$

Q25 A train is moving at a uniform speed of 120 km/hr. How far it will travel in 20 minutes?

- A) 30 km
B) 40 km
C) 50 km
D) 60 km

Q26 How many positive odd numbers can be formed from the digits 2, 3, 4, 5, and 6 if no digit is to be repeated in a given number?

- A) 48
B) 120
C) 130
D) None of these

Q27 The Computer Science Department of a college consists of 3 lecturers and 6 students. A study tour is to be arranged. In how many ways can a party of three be chosen so as to include at least one lecturer and one student?

- A) 126
B) 63
C) 54
D) None of these

Q28 If a die is rolled twice, what is the probability that the sum of the points is more than 9?

ALL ANSWERS MUST BE GIVEN ON THE COMPUTERIZED ANSWER SHEET
BY CROSSING THE CORRESPONDING LETTER

- A) $\frac{1}{6}$
- B) $\frac{5}{18}$
- C) $\frac{1}{12}$
- D) $\frac{1}{9}$

Q29 If three coins are tossed simultaneously, what is the probability of getting at most 1 head?

- A) 0.5
- B) 0.25
- C) 0.125
- D) 0.0625

Q30 If $x - y = 8$ and $xy = 7$, then $x^3 - y^3 =$

- A) 660
- B) 670
- C) 680
- D) 690

Q31 The mean proportional between 12 and 18 is

- A) 15
- B) 36
- C) $6\sqrt{6}$
- D) $-6\sqrt{6}$

Q32 Suppose y varies directly as x and $y = 144$ when $x = 36$. If $y = 16$ then x will be

- A) 0.24
- B) 4
- C) 324
- D) None of these

Q33 At present a mother is twice as old as his daughter. Twenty years back their ages were in the ratio of 10 : 3. The present age of the mother is

- A) 33 years
- B) 66 years
- C) 35 years
- D) 70 years

Q34 The number of cars of 110 families in a posh locality of the city are given below. The average number of cars per family is

No. of Cars / Family	1	2	3	4	5
No. of Families	15	25	30	25	15

- A) 2
- B) 3

ALL ANSWERS MUST BE GIVEN ON THE COMPUTERIZED ANSWER SHEET
BY CROSSING THE CORRESPONDING LETTER

- C) 4
- D) 5

Q35 If three lengths are given $a = 300$ cm, $b = 200$ cm and $c = 50$ cm, then with these sides we can construct

- A) one triangle
- B) two triangles
- C) no triangle
- D) None of these

Q36 Which expression is equivalent to $(7^{-2})^9$?

- A) -49^9
- B) $\frac{1}{7^{18}}$
- C) $\frac{1}{7^{11}}$
- D) 49^9

Q37 A company used 9.4×10^6 sheets of paper in a month. Of the paper used during the month, the HR department used 4.9×10^5 of the sheets and the Finance department used 3.6×10^4 of the sheets. How many sheets of paper were used by other departments during the month?

- A) 8.874×10^3
- B) 8.874×10^4
- C) 8.874×10^5
- D) 8.874×10^6

Q38 Which property is used to write $a(x + y) = ax + ay$

- A) Closure
- B) Commutative
- C) Associative
- D) Distributive

Q39 For what value of a will the system of equations $4x + 12y = -5$; $-5x + ay = 8$ have no solution?

- A) -5
- B) -15
- C) 12
- D) None of these

Q40 If $f(x) = x^5 + x^4 - x^3 - x^2$, then the value $f(x) + f(-x)$ is

- A) $2(-x^4 + x^2)$
- B) $2x^2(x + 1)(x - 1)$
- C) $2(x^5 - x^3)$
- D) None of these

Q41 The eliminant after eliminating θ between the equations:

$$x = a \sin \theta + b \cos \theta \text{ and } y = a \cos \theta - b \sin \theta \text{ is given by}$$

ALL ANSWERS MUST BE GIVEN ON THE COMPUTERIZED ANSWER SHEET
BY CROSSING THE CORRESPONDING LETTER

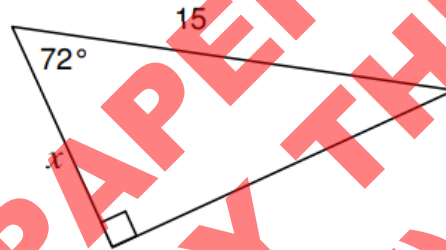
- A) $x^2 + y^2 = a^2 + b^2$
- B) $x^2 - y^2 = a^2 + b^2$
- C) $x^2 - y^2 = a^2 - b^2$
- D) $x^2 + y^2 = a^2 - b^2$

Q42 The sum of first 100 natural numbers is

- A) 505
- B) 5050
- C) 4950
- D) 4851

Q43 In the adjacent figure the value of X is

- A) $6\cos 72^\circ$
- B) $6\tan 72^\circ$
- C) $15\sin 18^\circ$
- D) $15\sin 72^\circ$



Q44 $\frac{1+\cos \theta}{\sin \theta} =$

- A) $\frac{1-\cos \theta}{\sin \theta - 1}$
- B) $\frac{1+\cos \theta}{1+\sin \theta}$
- C) $\frac{\sin \theta}{1-\cos \theta}$
- D) $\frac{1+\cos \theta}{1-\sin \theta}$

**SAMPLE PAPER THIS
(DO NOT COPY THIS
DOCUMENT)**

ALL ANSWERS MUST BE GIVEN ON THE COMPUTERIZED ANSWER SHEET
BY CROSSING THE CORRESPONDING LETTER

Q45 The daily earnings (in Rs.) of eight workers are given below.

700, 640, 620, 670, 600, 640, 660, 690

Three associated Measures of Central Tendency are related as

- A) Arithmetic Mean > Median > Mode
- B) Arithmetic Mean < Mode < Median
- C) Arithmetic Mean \leq Mode < Median
- D) Mode < Arithmetic Mean < Median

Q46 The measures of the sides of four triangles are given. Pick a triangle which is not a right-triangle

- A) 3cm, 4cm, 5cm
- B) 13cm, 12cm, 5cm
- C) 5cm, 10cm, 12cm
- D) 12cm, 16cm, 20cm

Q47 The sum of five consecutive odd integers is 645. The middle integer is

- A) 123
- B) 125
- C) 127
- D) 129

Q48 How many numbers are there between 156 and 289 that are divisible by 5?

- A) 24
- B) 25
- C) 26
- D) 27

Q49 The diagonal of a rectangular field is $y^2 + 16$ cm and one side is $8y$ cm. For what value of y the perimeter of the rectangular will be 62 cm.

I. 3 cm II. 5 cm III. 7 cm

- A) Only I
- B) Only II
- C) Only I and II
- D) Only II and III

Q50 A ladder is placed against a wall making an angle of 60° with the floor and reaching a height of 45 feet. The length of the ladder is

- A) $30\sqrt{3}$ feet
- B) 90 feet
- C) $45\sqrt{2}$ feet
- D) None of these

This is the end of Mathematics MCQs. Next section is English MCQs.

ALL ANSWERS MUST BE GIVEN ON THE COMPUTERIZED ANSWER SHEET
BY CROSSING THE CORRESPONDING LETTER

English M.C.Qs

No. of Questions: 45 (from 51 to 95)
Questions on Page Numbers: 10 To 19

Time: 50 Minutes
Negative Markings: **No**

For questions 51-57, identify the underlined words in the text as noun, verb, adjective or adverb.

A zoo in Indonesia is under **(51)** heavy criticism again. This comes after the zoo made **(52)** headlines for starving its animals, and then it closed in 2016 after an elephant died.

Now, a video has emerged **(53)** recently of a visitor **(54)** flicking a cigarette into an orangutan's living area. The primate picked it up and started **(55)** smoking. Animal activists are **(56)** livid and want the zoo to take full **(57)** responsibility.

Retrieved on March 16, 2018 from <https://www.newsinlevels.com/products/zoo-has-problems-level-3/#>

51

- A Noun
- B Verb
- C Adjective
- D Adverb

52

- A Noun
- B Verb
- C Adjective
- D Adverb

53

- A Noun
- B Verb
- C Adjective
- D Adverb

54

- A Noun
- B Verb
- C Adjective
- D Adverb

55

- A Noun
- B Verb
- C Adjective
- D Adverb

56

- A Noun
- B Verb
- C Adjective
- D Adverb

ALL ANSWERS MUST BE GIVEN ON THE COMPUTERIZED ANSWER SHEET
BY CROSSING THE CORRESPONDING LETTER

57

- A Noun
- B Verb
- C Adjective
- D Adverb

For questions 58-62, decide which answer (A, B, C or D) is the antonym of the underlined word.

58 Sidra's medical insurance is covered on a group policy.

- A HMO
- B public
- C workers
- D individual

59 Thorough cleaning retards the growth of bacteria.

- A limits
- B prevents
- C eliminates
- D encourages

60 Guests must park only in designated spaces.

- A distant
- B designed
- C unmarked
- D disintegrated

61 You might retain water if you use too much salt.

- A lack
- B reject
- C release
- D exclude

62 Carelessness can result in a critical injury.

- A trivial
- B painful
- C insulting
- D embarrassing

For questions ~~63-67~~, decide which answer (A, B, C or D) best fits each blank.

Betty was excited. It (63) _____ December the 1st and Christmas was only 24 days away. She was looking at a magazine for little girls. There were many pictures of dolls in the magazine. The dolls were (64) _____ many countries, such as Mexico, China and France. There were dolls from everywhere. She showed the pictures to her mom. (65) _____ "No, honey," her mom said, "Santa (66) _____ you only one doll. So pick the one you (67) _____ best." "But, Mommy," she said, "I like them *all* the best."

Retrieved on March 16, 2018 from <https://www.eslfast.com/supereasy/se/supereasy151.htm>

ALL ANSWERS MUST BE GIVEN ON THE COMPUTERIZED ANSWER SHEET
BY CROSSING THE CORRESPONDING LETTER

63

- A is
- B was
- C were
- D has been

64

- A of
- B by
- C in
- D from

65

- A "Mommy will santa bring me all these dolls"? she asked.
- B "Mommy, will Santa bring me all these dolls"? she asked.
- C "Mommy, will Santa bring me all these dolls?" she asked.
- D "Mommy will Santa bring me all these dolls," she asked.

66

- A brings
- B will bring
- C is bringing
- D has brought

67

- A like
- B likes
- C liked
- D are liking

For questions 68-76, fill in the blanks with the most suitable preposition.

A hawker is a person who moves (68) _____ one place to another and sell their goods, (69) _____ shouting. They work hard (70) _____ the day. They move (71) _____ the street (72) _____ their bicycle and sometimes (73) _____ foot and sell their products. We can see hawkers everywhere. They move everywhere selling their goods without caring (74) _____ the weather. There is a hawker who sells vegetables (75) _____ our locality. His name is Manoj. He brings fresh vegetables (76) _____ a very reasonable price. He is a nice and an honest hawker.

Retrieved on March 8, 2018, from <http://www.preservearticles.com/2011080510137/12-short-paragraphs-in-english-language-for-school-kids-free-to-read.html>

68

- A about
- B from
- C across
- D beyond

ALL ANSWERS MUST BE GIVEN ON THE COMPUTERIZED ANSWER SHEET
BY CROSSING THE CORRESPONDING LETTER

69

- A on
- B by
- C with
- D through

70

- A in
- B at
- C during
- D throughout

71

- A in
- B on
- C to
- D from

72

- A on
- B in
- C of
- D from

73

- A by
- B on
- C across
- D through

74

- A of
- B off
- C for
- D about

75

- A at
- B on
- C in
- D from

76

- A on
- B at
- C in
- D of

ALL ANSWERS MUST BE GIVEN ON THE COMPUTERIZED ANSWER SHEET
BY CROSSING THE CORRESPONDING LETTER

For questions 77-81, look at the text in each question then circle the correct answer (A, B, C or D).

77 Where can you see this?

ANYONE OVER 12 YEARS OF AGE MUST PAY THE FULL ADULT FARE.

- A in a shop
- B in a train station
- C college cafeteria
- D on the school notice board

78 Where would you see this instruction?

Please update your antivirus software.

- A in a letter
- B in a magazine
- C on your computer screen
- D in a doctor's waiting room

79 For what sport would you do this?

Talk to Amjad at reception if you would like to hire a court.

- A gym
- B tennis
- C snooker
- D swimming

80 Where would you see this message?

Looking for new friends?
Come along to room 7 at 8 p.m. on Tuesday
for the first meeting of S.K.Z. College's Friendship club.

- A in a brochure
- B in a newsletter
- C on a notice board
- D in a personal e-mail

81 Where would you find this extract?

Moreish and very fattening!
But who cares?
I tell you the taste is out of this world!

- A in a doctor's report
- B on the label of a product
- C on a new box of chocolates
- D in a review of new food items

ALL ANSWERS MUST BE GIVEN ON THE COMPUTERIZED ANSWER SHEET
BY CROSSING THE CORRESPONDING LETTER

For question 82-83, reorder the sentences (I-IV) to make a coherent paragraph (A, B, C or D).

82

I Libraries are free!

II They offer a quiet space to sit, read, think, do research ... a real escape from the outside world.

III Personally, I still love libraries.

IV When I was at university, I frequently spent hours at the library and borrowed numerous journals, articles and other printed materials, as it was just too expensive to buy brand new books every week to read for seminars and lectures.

- A I, II, III and IV
- B I, III, II and IV
- C III, II, IV and I
- D IV, I, II and III

83

I During these past five years, the number of people visiting our city's art museums has increased by a similar percentage.

II Thus, some of the city's funds for supporting the arts should be reallocated to public television.

III In a recent citywide poll, 15 percent more residents said that they watch television programs about the visual arts than was the case in a poll conducted five years ago.

IV Since the corporate funding that supports public television, where most of the visual arts programs appear, is now being threatened with severe cuts, we can expect that attendance at our city's art museums will also start to decrease.

- A III, I, IV and II
- B II, I, III and IV
- C III, IV, I and II
- D I, III, IV and II

For questions 84-87, read the following passage and choose the best heading (A, B, C or D) for the blanks.

7 Reasons you fail to meet your deadlines
November 3, 2011
From Femeo

Have you been having trouble getting your tasks done on time lately? Even if you're a hard worker, every once in a while you may fall behind and it can be very difficult getting back on track. Here are a few ideas as to why you might be missing your deadlines at work.

(84) _____

One of the most common reasons that has you missing deadline after deadline is that once you fall behind in one assignment, all the others have to be pushed back too. It's a vicious cycle.

(85) _____

ALL ANSWERS MUST BE GIVEN ON THE COMPUTERIZED ANSWER SHEET
BY CROSSING THE CORRESPONDING LETTER

Hard workers especially suffer because they're always the first to accept assignments (and the first to be assigned to them) even if it's impossible to fit that many working hours in a day or week.

(86) _____

One of the biggest faults of deadline-missers is that they assumed they knew exactly what they had to get done and in what amount of time. They choose not to map out a timetable and end up wasting so much precious time.

(87) _____

Spending too much time on one little task just to make it perfect is one of the worst habits to pick up. Assign a set amount of time for each task and stick to it.

Retrieved on November 3, 2011, from <http://femeo.bayt.com/en/articles/efficiency-tips/7-reasons-you-fail-meet-your-deadlines>

- 84
- A Piling up of work
 - B A chain of events
 - C Ignoring deadlines
 - D Unnecessary delays
- 85
- A Too much too fast
 - B Working without breaks
 - C Problem with hard workers
 - D Punishment for working hard
- 86
- A Unclear goals
 - B Time wastage
 - C Missing deadlines
 - D Who needs planning?
- 87
- A Follow rules
 - B Organize yourself
 - C Perfectionism can hurt
 - D Right time for the right task

For questions 88-90, read the following poem by Shel Silverstein and answer the questions that follow.

Whosoever room this is should be ashamed!

His underwear is hanging on the lamp.

His raincoat is there in the overstuffed chair,

ALL ANSWERS MUST BE GIVEN ON THE COMPUTERIZED ANSWER SHEET
BY CROSSING THE CORRESPONDING LETTER

And the chair is becoming quite mucky and damp.
His workbook is wedged in the window,
His sweater's been thrown on the floor.
His scarf and one ski are beneath the TV,
And his pants have been carelessly hung on the door.
His books are all jammed in the closet,
His vest has been left in the hall.
A lizard named Ed is asleep in his bed,
And his smelly old sock has been stuck to the wall.
Whosoever room this is should be ashamed!
Donald or Robert or Willie or--
Huh? You say it's mine? Oh, dear,
I knew it looked familiar!

Retrieved on March 14, 2018 from

http://famouspoetsandpoems.com/poets/shel_silverstein/poems/14818

88 The speaker describes all of the following features of the room except

- A** The shelves are disorganized.
- B** The furniture is collecting dust.
- C** The size of the room is very small.
- D** There are dirty clothes thrown around.

89 Which of the following is the most suitable title for this poem?

- A** My room
- B** A messy room
- C** A weird room
- D** An empty room

90 What is the twist that happens at the end of the poem?

- A** The speaker finds a lizard in bed.
- B** The speaker puts the room in order.
- C** The speaker begins to like the room.
- D** The room turns out to be of the speaker.

ALL ANSWERS MUST BE GIVEN ON THE COMPUTERIZED ANSWER SHEET
BY CROSSING THE CORRESPONDING LETTER

For questions 91-95, read the following passage and answer the questions that follow.

1. For thousands of years people have told stories about heroes. Heroes are strong, brave people who help others. Today we can read stories and watch films about superheroes. What is a superhero?
2. Superheroes have special powers which they use to do good things like helping people and fighting crime. They usually wear special clothes, like a cape. Sometimes they wear a mask so no one knows who they are. Some superheroes use gadgets, like Spiderman's web shooter.
3. Modern superheroes started as stories in comic books. Superman was one of the first famous superheroes. The first Superman comic was published in 1938. Superman is an alien from the planet Krypton. He can fly and he is super strong. He is super fast and no weapons can hurt him. The only thing that can hurt him is Kryptonite rock from his home planet.
4. In 1941, Wonder Woman was created. She was the first female superhero. Wonder Woman's story comes from ancient Greek myths. She has some superhuman powers like Superman. She is good at fighting and she has lots of weapons too like a lasso and magic bracelets.
5. Sometimes superheroes have friends that help them, like Jimmy Olsen in the Superman stories. These friends are called 'sidekicks'. One of the most famous sidekicks is Robin from 'Batman and Robin'. Sometimes superheroes group together like Iron Man, Captain America and Thor in the Avengers, or the mutants in the X-Men team.

Retrieved on March 16, 2018 from <https://learnenglishkids.britishcouncil.org/en/reading-practice/superheroes>

91 The word "cape" in paragraph 2 is closest in meaning to

- A a short cloak
- B an undershirt
- C a sweater vest
- D a knee-length trouser

92 The word "ancient" in paragraph 4 is closest in meaning to

- A affable
- B age-old
- C popular
- D acclaimed

93 The superheroes wore masks

- A to protect their identity
- B to make themselves stand out
- C because their faces were disfigured
- D because they wanted to look different

ALL ANSWERS MUST BE GIVEN ON THE COMPUTERIZED ANSWER SHEET
BY CROSSING THE CORRESPONDING LETTER

94 Which of the following features of superheroes is not mentioned in the passage?

- A Nationality
- B Special powers
- C Physical appearance
- D Their popularity over the ages

95 Which of the following best characterizes the kind of writing in the paragraph?

- A Narration
- B Persuasion
- C Informational
- D Compare and contrast

This is the end of English MCQs.

**SAMPLE PAPER THIS
(DO NOT COPY THIS
DOCUMENT)**